



ON^{& OFF}CAMPUS



Message from the COO

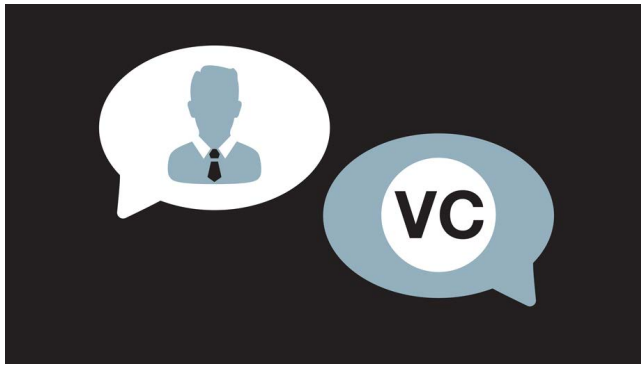
As we see the cautious lifting of some government restrictions in the last few days it is inevitable our minds turn again to being more on than off campus and when that might happen. Our experts now have a better understanding of the effective public health management of COVID-19 and we believe the University's comprehensive response measures and your sensible actions have contributed to the outstanding outcomes in the ACT. At the same time, we all have an eye on those countries where initial successes have deteriorated with worrying increases in the rates of infection.

» [Read the COO's full message here](#)

Your feedback is important

It's important we deliver communications relevant to our community, but it's also important you receive all the information you want and need. If you have any feedback or suggestions for content you'd like included in On&OffCampus, or the frequency of editions, please email covid19comms@anu.edu.au.

» [Send feedback here](#)



Vice-Chancellor's staff forum

The Vice-Chancellor held his first virtual 'Ask Me Anything' staff forum last week to gain a better understanding about our new campus environment.

You can listen to your colleagues' questions to the VC, including funding, returning to campus and other topics.

» [Listen to forum here](#)



Supporting our community

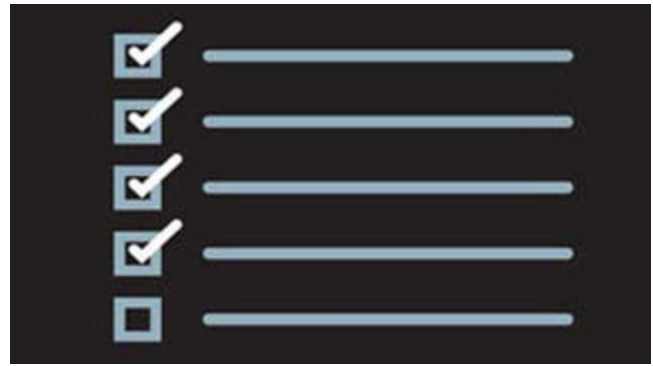
Respectful Relationships Unit will be hosting a webinar about effective bystander intervention on racism and discrimination in the coming weeks. Watch this space for more details and read the *Bystander is a VERB* [poster](#).

RRU also offers [training and education programs](#) available for all staff and students.

» [More information here](#)

Reminders

The Vice-Chancellor will host his first **virtual forum for HDR candidates** on Tuesday 5 May from 4.15-5.15pm

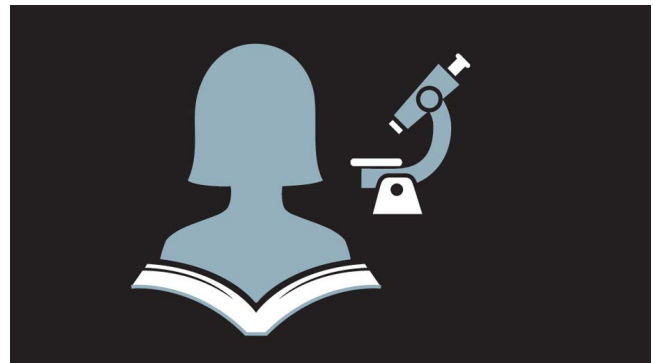


WHS Checklist for staff

It's important we know your set up at home so we can better support you while working remotely. Please complete the checklist for staff and email it to your supervisor and whs@anu.edu.au.

If you have already filled out this checklist, thank you, there is no need to fill it out again.

» [Complete checklist](#)



HDR COVID-19 Extension Scholarship

HDR candidates can apply for an additional extension scholarship in recognition of the disruption COVID-19 has caused.

Candidates are eligible to apply if they are between 3 and 3.5 years into their scholarship.

» [More details including application here](#)

ANU staff can access the Chifley Library through swipe card access. All levels will be open 24 hours. More information about Library services **here**.

In case you missed it, **watch** Malcolm Turnbull and Katharine Murphy's in conversation on Turnbull's latest book *A bigger picture*.

Join staff and students for a 'collective breath' in a **weekly facilitated mindfulness practice** every Tuesday via Zoom from 11.30am-12pm.

Listen to Professor David Kilcullen in conversation with Professor John Blaxland on David's new book, *The Dragons and the Snakes. How the rest learnt to fight the west*.

Before campus closure, staff were allowed to take home items that could be transported safely. Please make sure all the equipment you have taken home is registered using the **Equipment Register form**.

ANU now provides access to DocuSign to support working through the electronic signing of documents. You can sign up for **DocuSign online drop-in training session** on 1 May 2020.

Please don't forget to update your circumstances using the eform **here**. This form can be updated whenever your situation changes. All information is kept completely private.

This is the last week for flu shots at ANU Flu Clinic. National Health Co-op is providing **free flu vaccinations**. Book yours now.

Find us on 

For all the latest updates, follow our 'ANU On Campus' page on facebook or head to our dedicated COVID-19 response webpage anu.edu.au/covid-19-advice.

Want to contribute to On&Off Campus? Please send COVID-19 related information to covid19comms@anu.edu.au.

The Australian National University, Canberra | CRICOS Provider : 00120C | ABN : 52 234 063 906 | [Privacy Policy](#)